

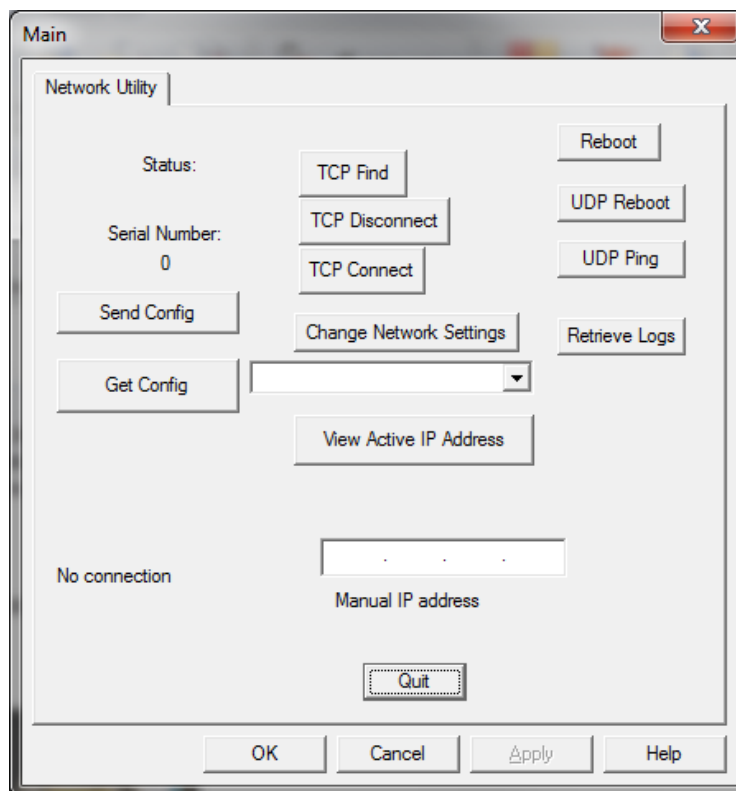
Snet Ethernet Utility

Below you will find two links. The first link is to download Winscan 1.89. Once you have downloaded and installed Winscan 1.89 you can then download the Snet Ethernet utility. Place the Snet.exe in the C:\Program Files\Winscan\Program directory. Once you have done that, double click the Snet.exe utility. You will see a screen like the one below appear. **(Example 1)**. If you have any questions or concerns please give our 24/7 Technical Support a call at 1-800-296-4120 inside the US and 1-540-434-4120 outside the US.

Winscan 1.89 - <http://www.powermonitors.com/download/file/winscan-v189>

Snet.exe - <http://www.powermonitors.com/download/file/snet>

Example 1:



How to use your Snet Ethernet Utility

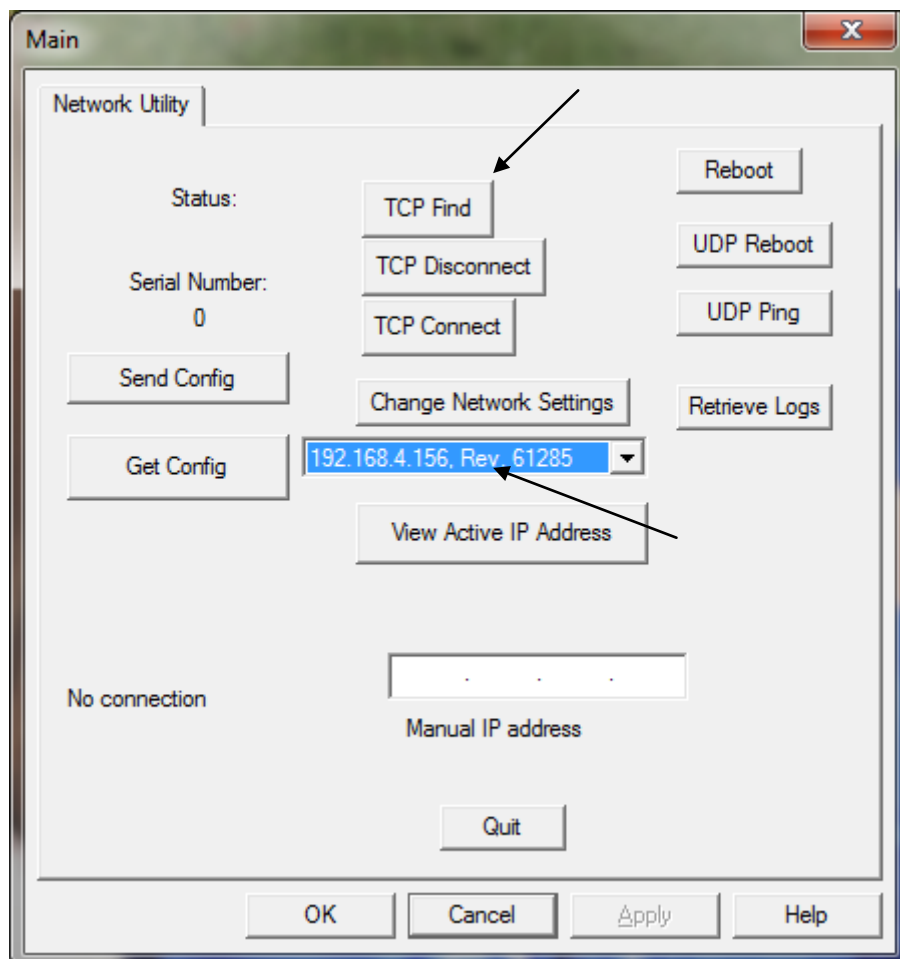
The Snet Ethernet Utility (Snet) will allow you to manage your Revolution recorder(s) on an Ethernet network. With Snet you can plug your Revolution(s) into an active 10/100 Ethernet jack. If the network you plug your Revolution(s) into is running a DHCP Server (Dynamic Host Configuration Protocol) your recorder(s) will automatically be assigned an IP Address. The LAN LED (**Example 2**) on your Revolution(s) will start blinking Red. The LAN LED will continue to blink Red until the recorder(s) receives an IP Address from the DHCP Server. The time it takes to receive an IP Address will vary from network to network. If after 20-30 minutes, the LAN LED is still blinking Red you should contact the System Administrator of the Network you are connected to. Once the recorder(s) have obtained an IP Address the LED will then blink Green.

Example: 2



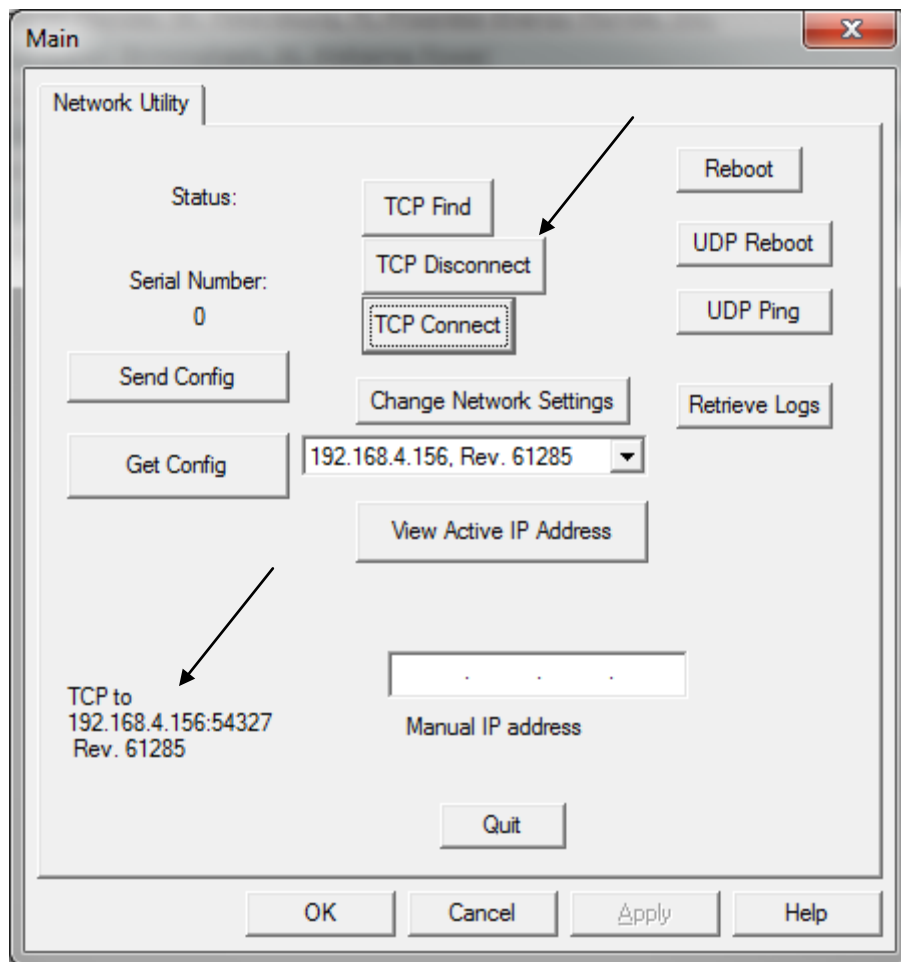
Once the LED is blinking Green you can now start using the Snet utility to talk to your recorder. Browse to your C:\Program Files\Winscan\Program directory and double click the Snet.exe icon. Click the TCP Find button (**Example 3**). Your recorder(s) IP Address will appear in the window. (**Example 3**). *NOTE: If you are trying to connect to a recorder on another Subnet your Router will need to have Port 3141 for TCP/IP open and Port 7151 for UDP. If you can only have one port open then use Port 3141 for TCP/IP.*

Example: 3

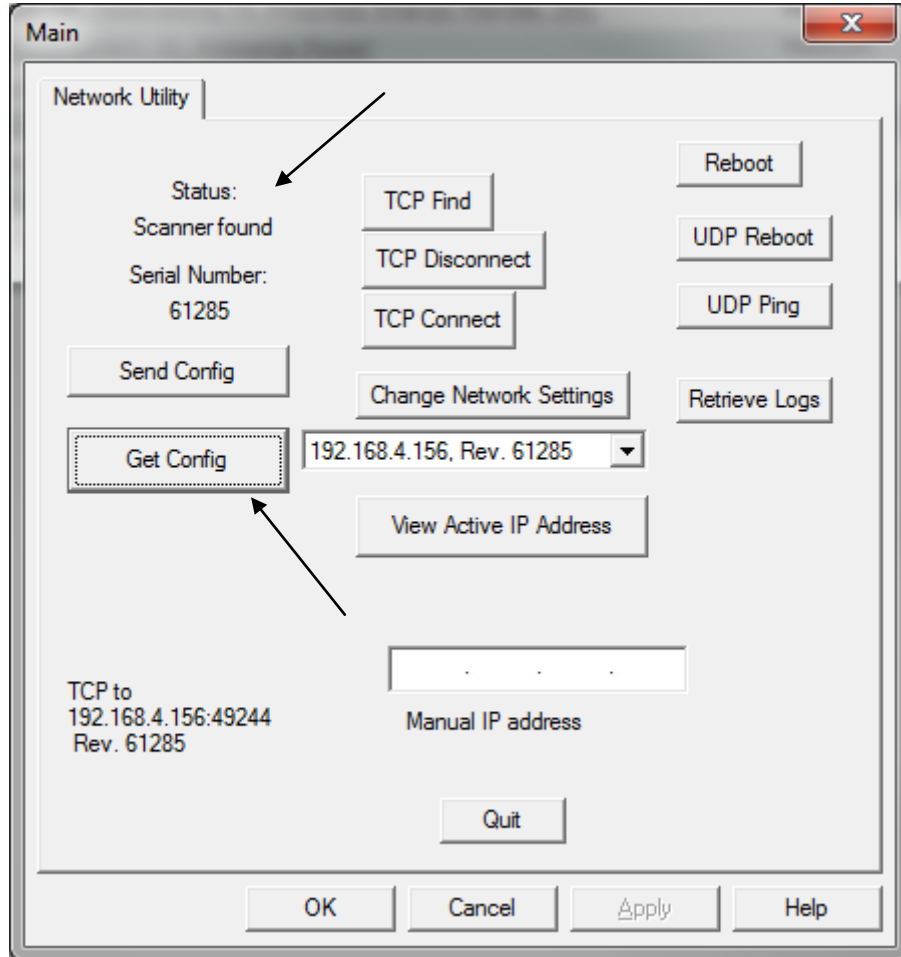


Once you see your recorder(s) in the drop down box you can now click on TCP Connect (**Example 4**). You will now see in the bottom Left corner the IP Address and the recorder(s) serial number. If you click on Get Config (**Example 5**) button you will get some information in the top Left of the screen.

Example: 4

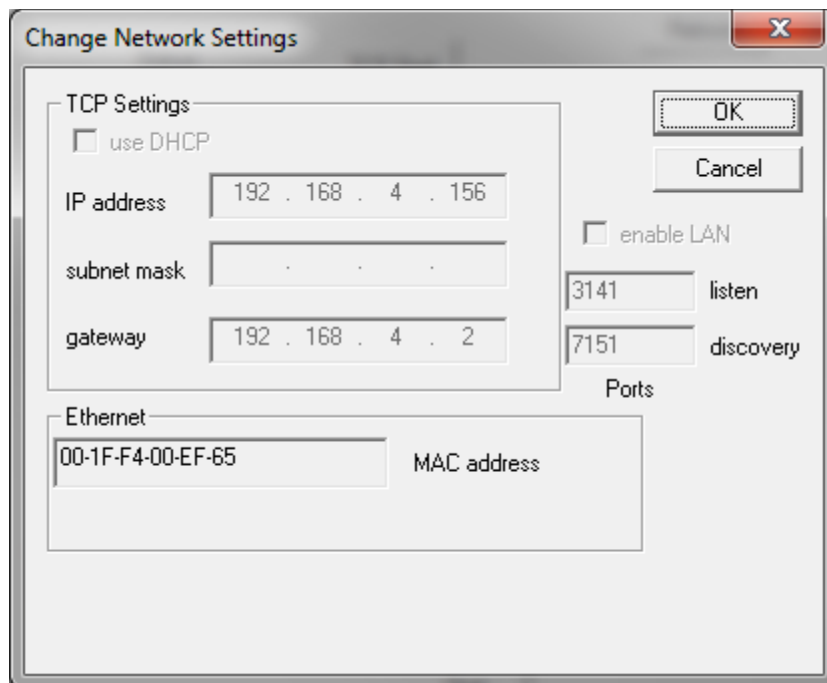


Example: 5



If you click on View Active IP Address (**Example 6**) you will get a READ ONLY screen shot of your IP Address, Gateway (Gateways, also called **protocol converters**, can operate at any layer of the OSI model. The job of a gateway is much more complex than that of a router or switch. Typically, a gateway must convert one protocol stack into another.) and the ports your recorder(s) are using. You will also see your recorder(s) MAC address (Short for **Media Access Control address**, a hardware address that uniquely identifies each node of a network.)

Example: 6



Change Network Settings

TCP Settings

use DHCP

IP address: 192 . 168 . 4 . 156

subnet mask: . . .

gateway: 192 . 168 . 4 . 2

enable LAN

3141 listen

7151 discovery

Ports

Ethernet

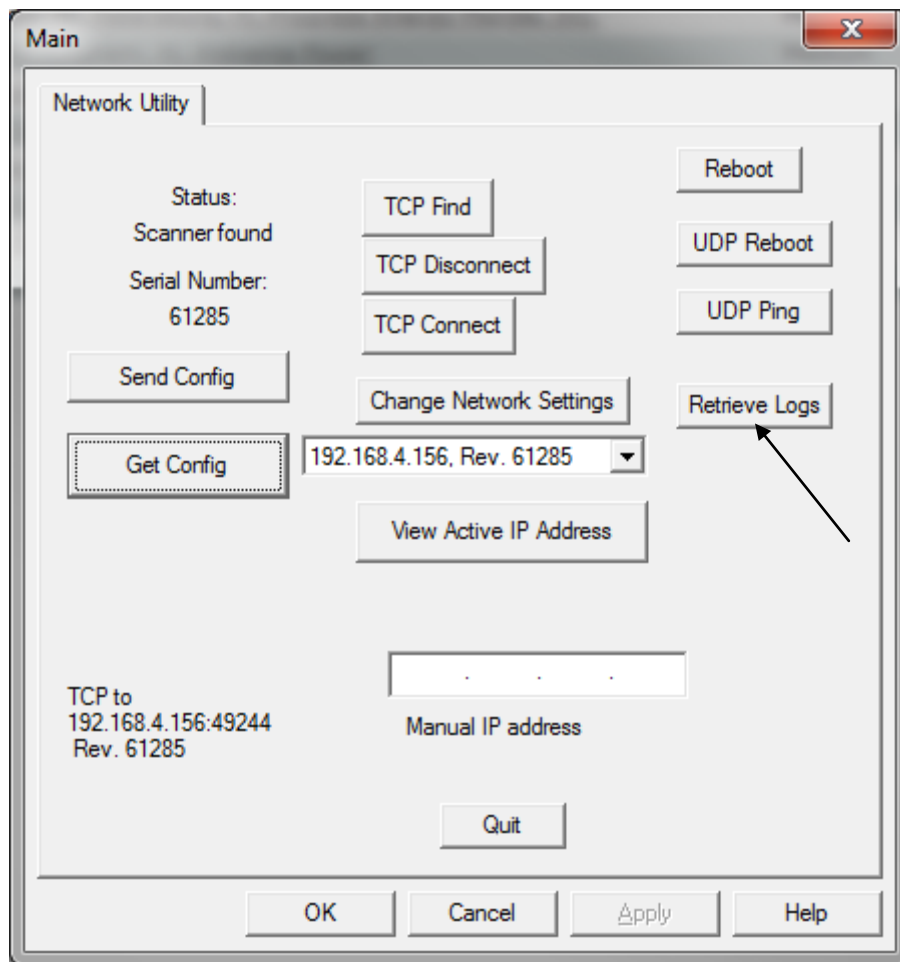
00-1F-F4-00-EF-65 MAC address

OK

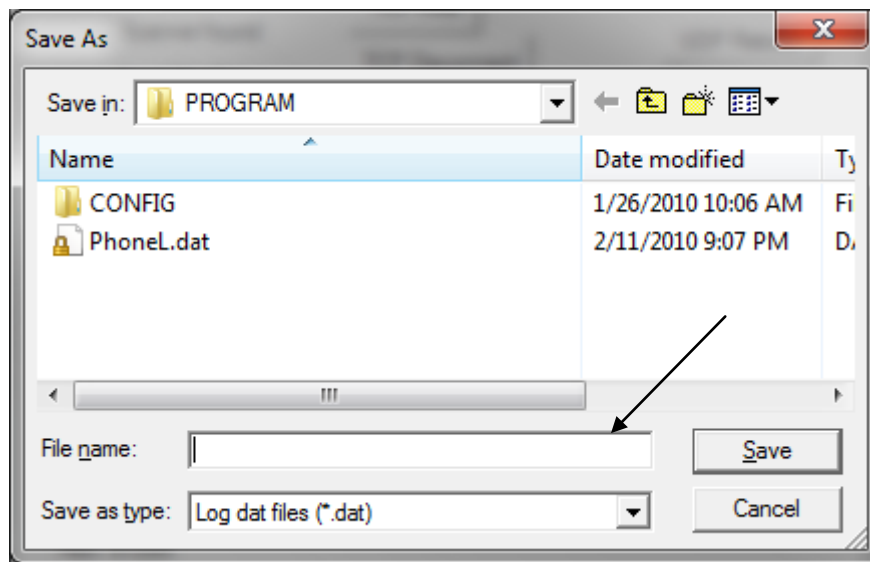
Cancel

You can retrieve the Log files if you are having trouble with your recorder and send them to support@powermonitors.com for our Engineers to troubleshoot by clicking on Retrieve Logs (**Example 7**). You will be asked where to save the log file (**Example 7a**) Once you have saved the file you can attach it to an email.

Example: 7

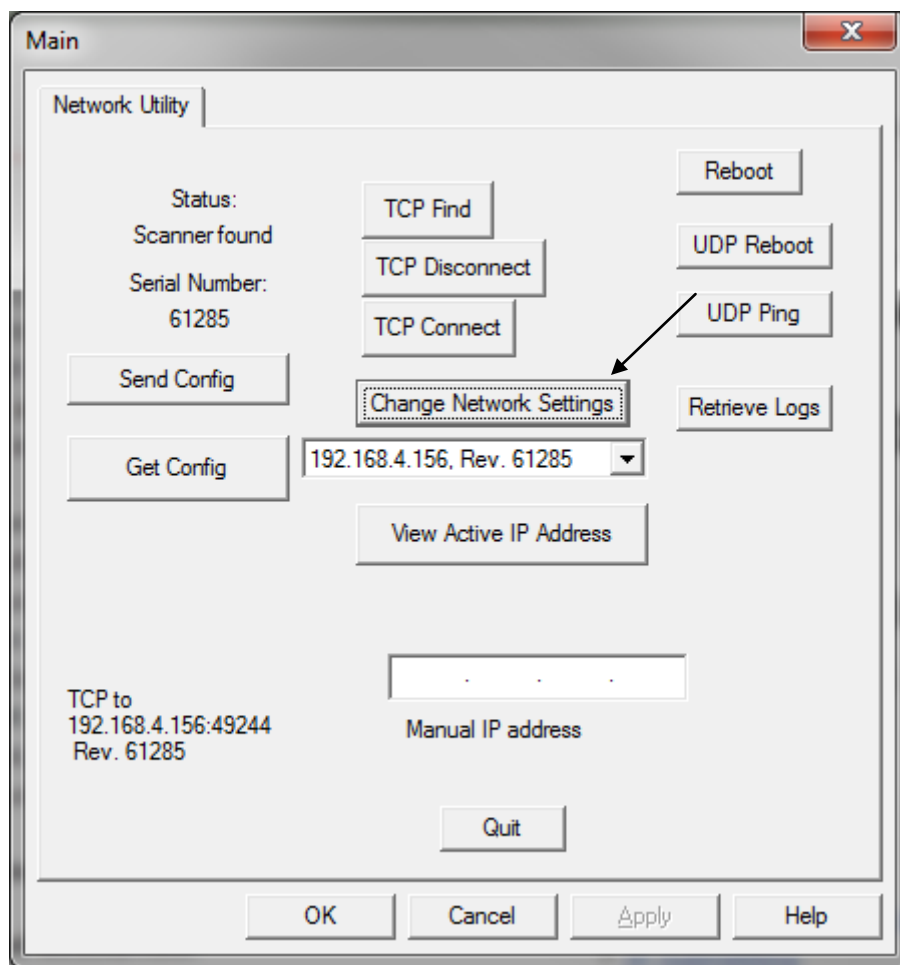


Example: 7a

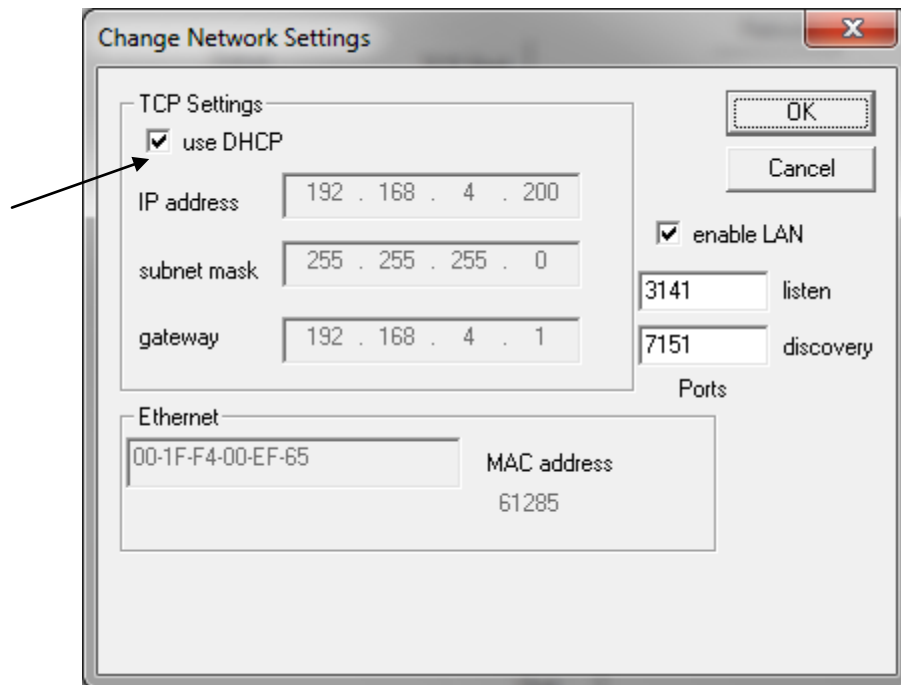


You can click on Change Network Settings (**Example 8**) and a window will appear (**Example 8a**) that you can enter your own IP Address, Subnet (A **subnet** is a logical grouping of connected network devices.) & Gateway information. Uncheck use DHCP if you want to make changes to the network settings. Once you are finished making your changes you can click OK. Then click Send Config (**Example 9**) so your recorder(s) network information will be updated.

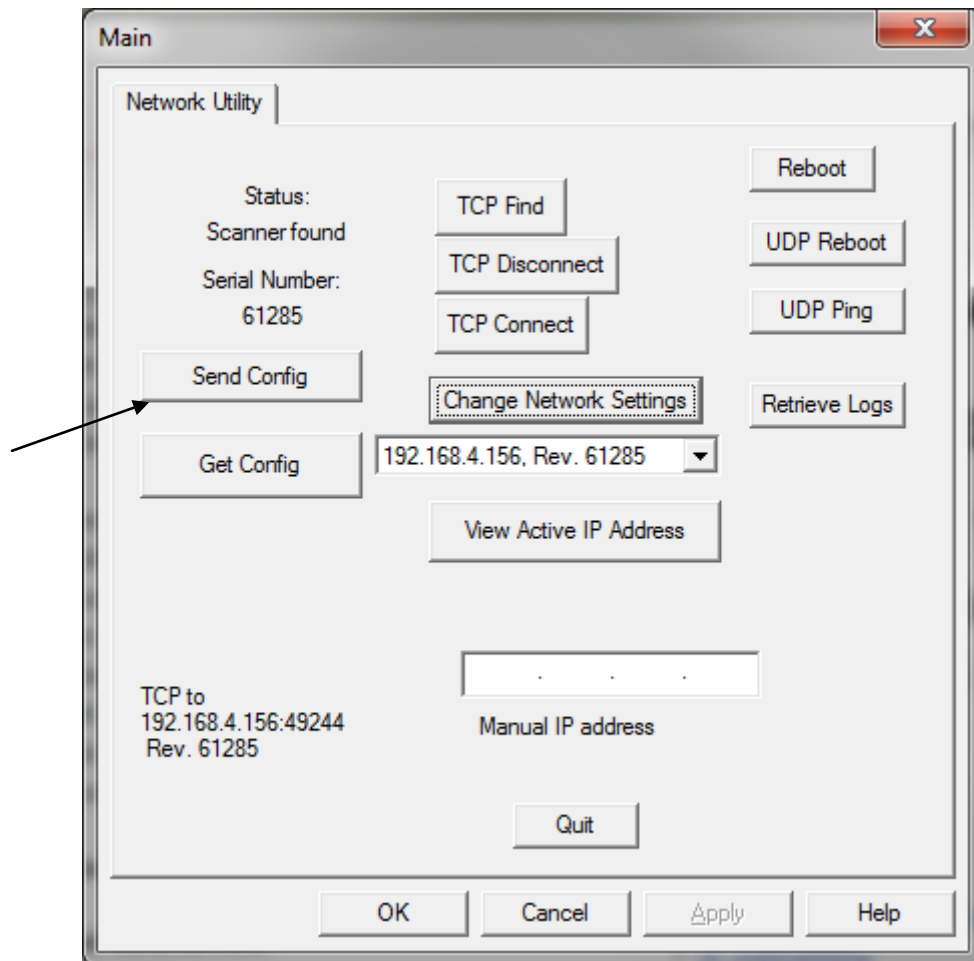
Example: 8



Example: 8a

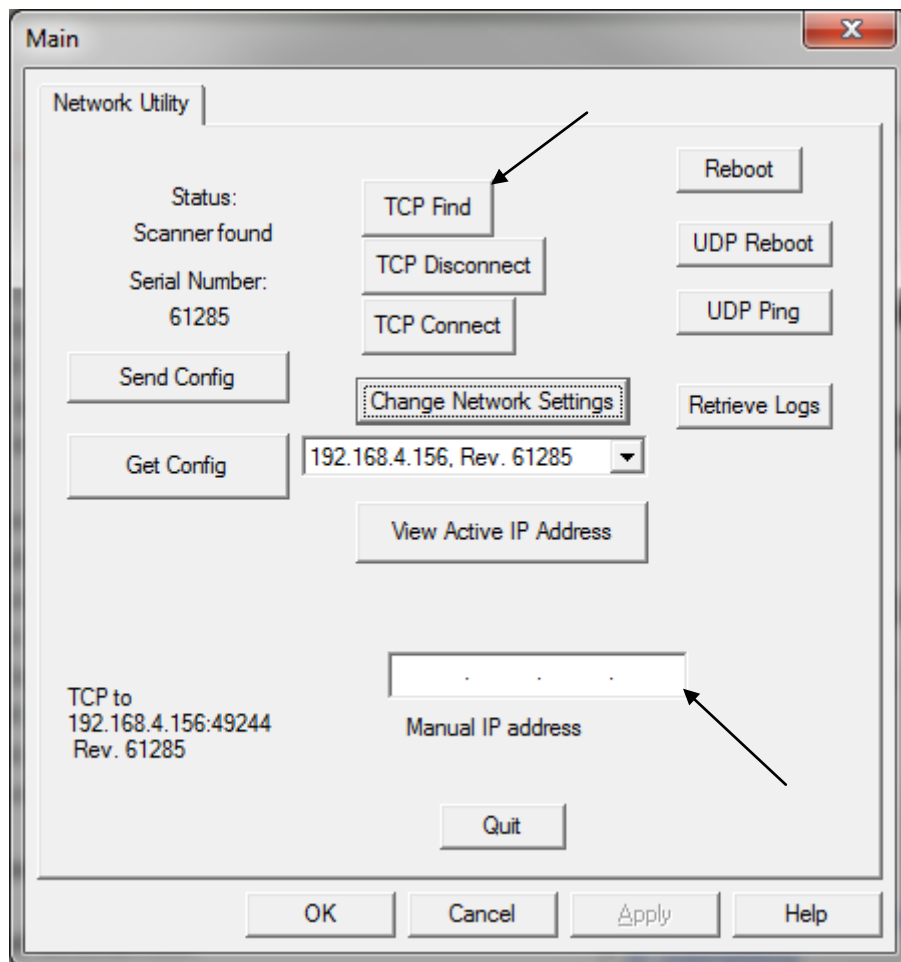


Example: 9



If you know your recorder(s) IP Address you can enter it in the Manual IP address (**Example 10**) and then click TCP Find.

Example: 10



Revised 7/16/2010